

SVENDBORG BRAKES, DENMARK
 CVR / VAT: 13256438
 WWW.SVENDBORG-BRAKES.COM
 THIS DRAWING/DOCUMENT REMAINS THE PROPERTY OF SVENDBORG BRAKES AND MUST NOT BE COPIED WITHOUT OUR PRIOR WRITTEN PERMISSION. AND THE CONTENTS THEREOF MUST NOT BE DISCLOSED TO ANY THIRD PARTY. NOR BE USED FOR ANY UNAUTHORIZED PURPOSE. LEGAL ACTION WILL BE TAKEN IN THE EVENT OF CONTRAVENTION.

REV. E 100743 RMJ 07.06.2019
 REV. F 101436 SFR 17.09.2020
 REV. G 102880 RMJ 25.08.2023

BOLTS M16 CLASS 10.9
 $M_v = 220 \pm 15 \text{ Nm}$
 WITH MoS2

BOLTS M33 CLASS 10.9
 $M_v = 1520 \pm 50 \text{ Nm}$
 WITH MoS2

BOLTS M24 CLASS 10.9
 $M_v = 607 \pm 30 \text{ Nm}$
 WITH MoS2

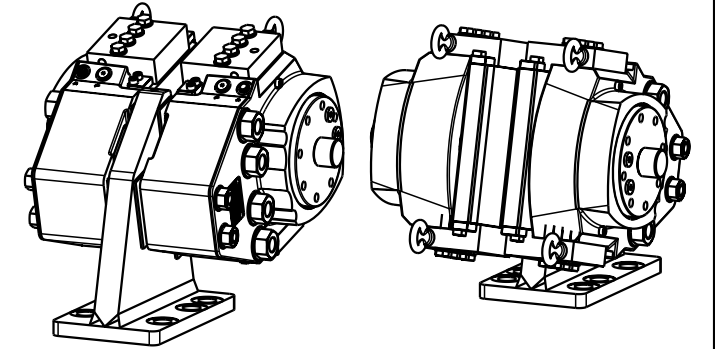
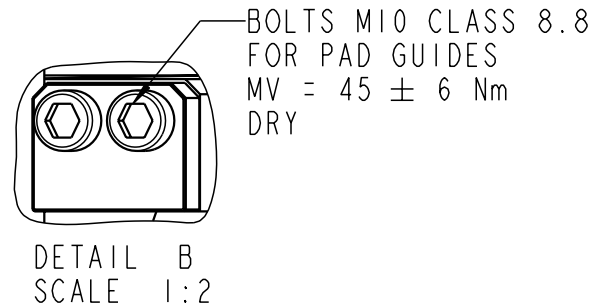
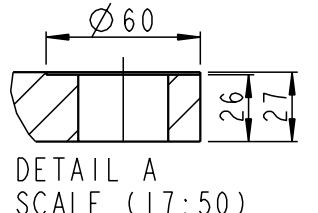
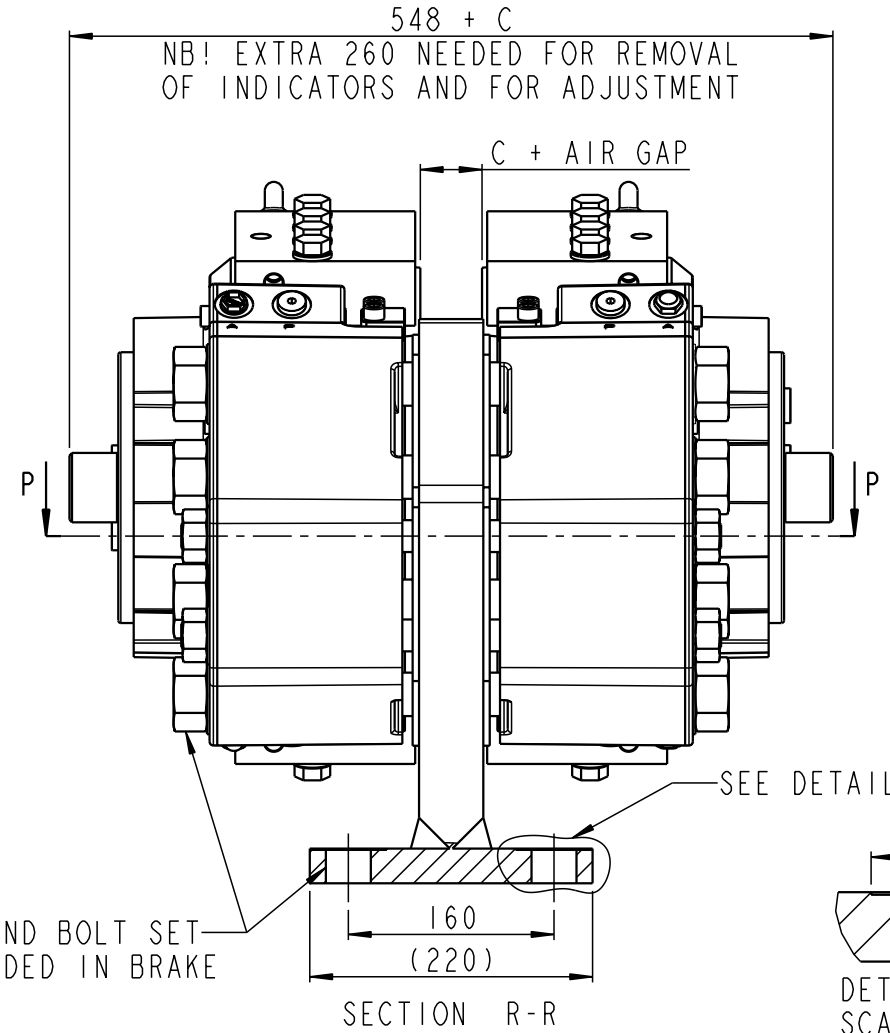
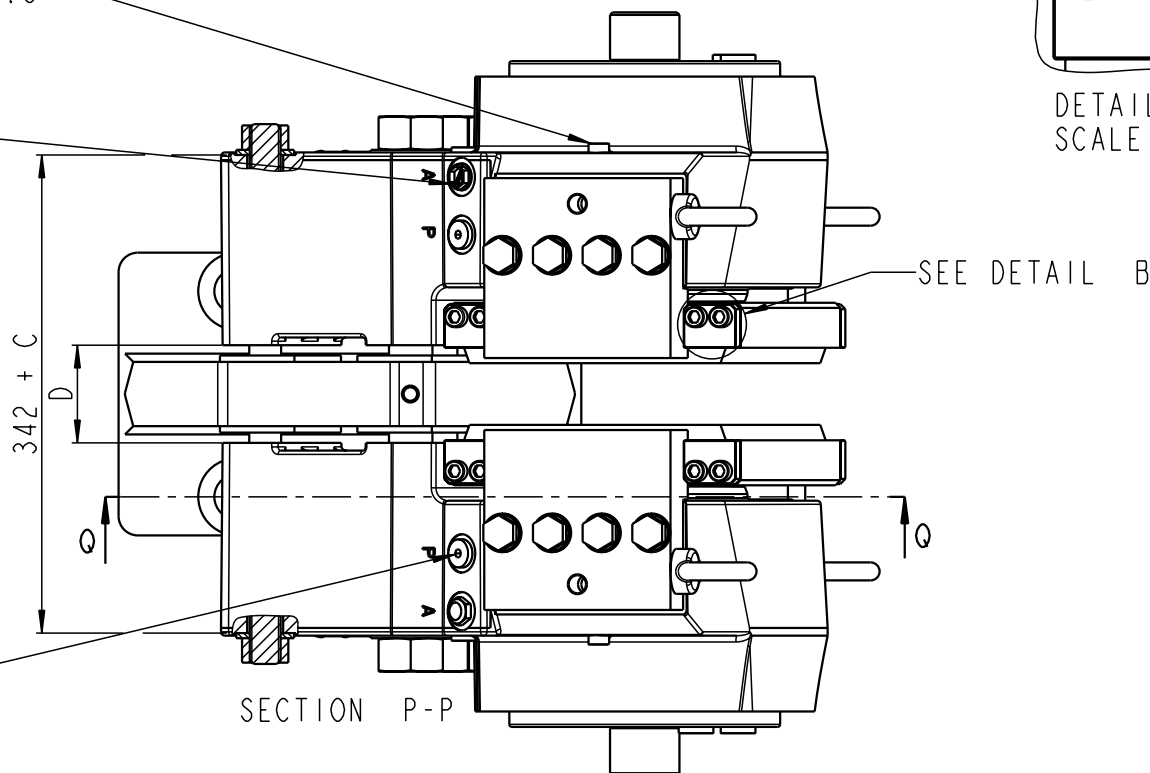
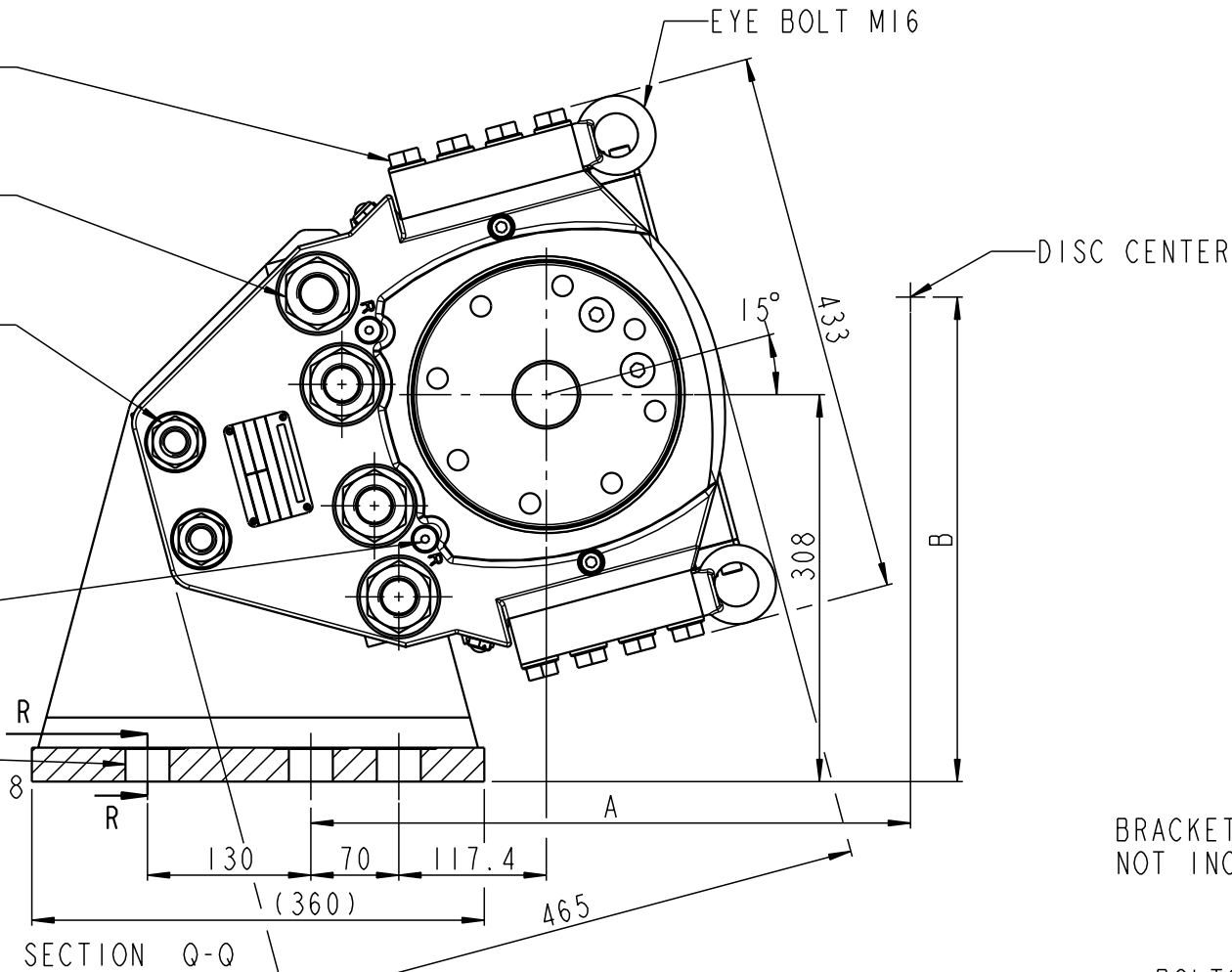
DRAIN PORT
 G1/4

$\varnothing 35$ (6x)
 FOR BOLTS M30 CLASS 8.8
 $M_v = 1040 \pm 50 \text{ Nm}$
 WITH MoS2
 (BOLTS NOT INCLUDED)


BOLTS M10 CLASS 8.8
 $M_v = 27 \pm 2 \text{ Nm}$
 DRY

DRAIN PORT
 G3/8

PRESSURE PORT
 G3/8



DISTANCE FROM CENTER OF DISC (R = RADIUS OF DISC)
 $A = 0.966(R-110) + 117.2$
 $B = 0.259(R-110) + 307.9$
 $C = \text{DISC THICKNESS}$
 $D = \text{MOUNTING SURFACE WIDTH} = C + 30$
 BRACKET DIMENSIONS BASED ON BRACKET 8228-1183-802 (C MIN. 30MM)
 MOUNTING DATA, SEE DRAWING 490-1046
 WEIGHT: APPROX. 310KG INCL. BRAKE PADS (EXCL. BRACKET AND BOLTS)

TOLERANCES FOR INTERNAL AND EXTERNAL RADII, ANGLES AND CHAMFERS ACCORDING TO: ISO 2768 - mK		ALL DIMENSIONS IN mm	DRAWING STATUS
DRAWN BY R.R. Hansen		DESCRIPTION BSFH 500-S-501	Released
DATE 07.02.2006			
DRAWING NO.		490-3562	SCALE 17:100 (A3)
		SHEET 1 OF 1 SHEETS	