

HYDRAULIC POWER UNITS PORT CRANES

DESCRIPTION

Hydraulic systems from Svendborg Brakes are designed to work in heavy duty industrial applications. They feature a number of advantages:

- Fast braking & retraction time
- Redundant return valves – ensure a fast and safe operation
- Hand pump for manual release of brake in case of power failure
- Safe manual opening for crane lowering
- Reliable closed loop system with no external piping on the hydraulic systems
- High grade / high pressure alloyed aluminium control block
- Standard components – spare parts always in stock
- Low power consumption on electrical motor – 0,75 kW motor
- Pressure switch – accumulator storage – prevent start and stop
- Gear pump – less sensitive to oil impurities
- 10 micron in-line oil filter
- 2/2 ways seat valves - reduce risks of internal leakage & numbers of start / stop
- 10 micron air breather
- Oil temp. & level switch. Warning if too high oil temp. & too low oil level
- Several test points on the systems by means of Minimesse® couplings



SIZE LARGE
25L tank with junction box



SIZE MEDIUM
6L tank with junction box



SIZE SMALL
3L tank with junction box



FAV – SERVICE BRAKES

APPLYING BRAKE

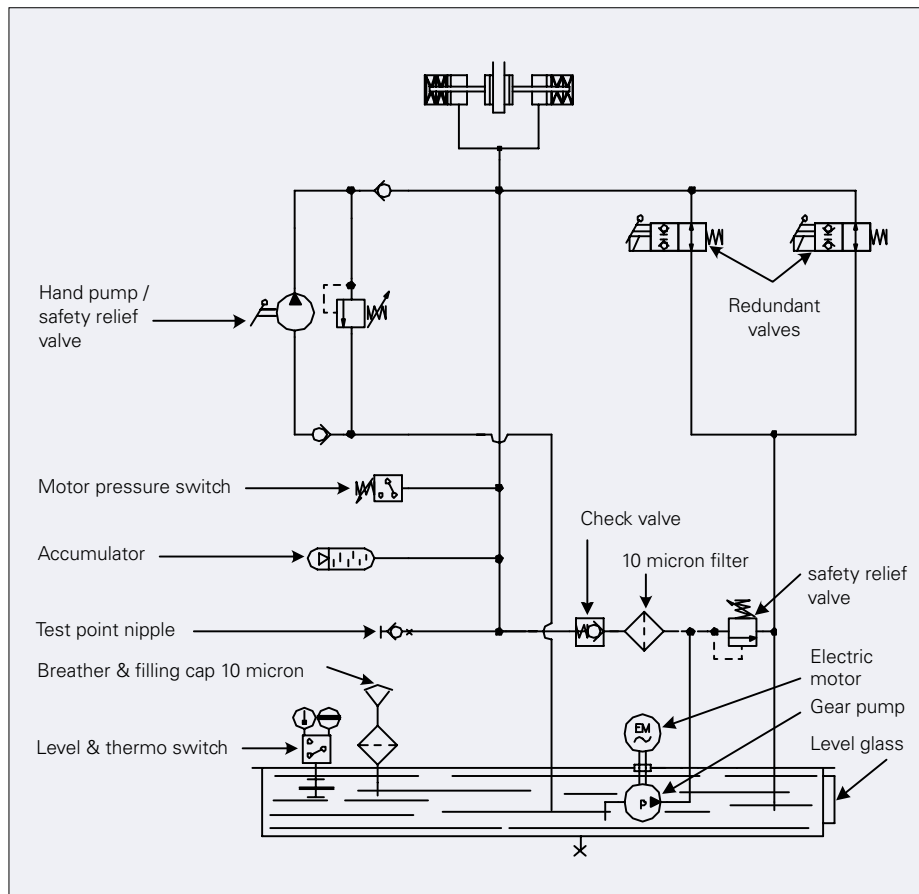
Brake is applied on command or at power failure. Power is disconnected to the valves. Oil pressure is dumped from brake to tank applying the brake. Pressure will be maintained in the accumulator ready for next quick start operation.

QUICK BRAKE CONTACT

The oil is dumped to the tank through both dump valves to ensure a fast and secure operation even if one valve should fail.

OPERATION IN CASE OF POWER FAILURE

In case of malfunction in main energy system, the system can be pressurized by using the hand pump. This makes it possible to release the brakes manually.



SPECIFICATIONS

Typical motor voltages:

AC 50Hz:

- 1 x 230V
- 3 x 400V
- 3 x 500V
- 3 x 690V

AC 60Hz:

- 1 x 110V, 3 x 208
- 3 x 575V
- Motors voltage tolerance +/- 10%
- Power needed: 0,75kW

Possible solenoid voltages:

- DC: 12V, 24V, 48V
- AC: 110V, 230V

Power needed:

- 19W per solenoid

Oil tank sizes:

- 3 & 6 & 25 liter

Ambient temperature limits:

- -20 grader C +40oC
- -4 grade oF +104oF

Weight:

- Approx. kilograms:
Small: 36 | Medium: 40 | Large: 60
- Approx. pounds:
Small: 79 | Medium: 88 | Large: 132

Protection class for electrical:

- components: IP55

Further options:

- Quick opening valve
- Tank heater
- Cabinet
- Customized hydraulic unit
- Automatic lowering with or without external power supply

**SVENDBORG
BRAKES™**

Regal Rexnord

Jernbanevej 9

DK-5882 Vejstrup, Denmark

+45 63 255 255

sb@svendborg-brakes.com

[svendborg-brakes.com](https://www.svendborg-brakes.com) | [regalrexnord.com](https://www.regalrexnord.com)

The proper selection and application of products and components, including assuring that the product is safe for its intended use, are the responsibility of the customer. To view our Application Considerations, please visit <https://www.regalrexnord.com/Application-Considerations>.

To view our Standard Terms and Conditions of Sale, please visit <https://www.regalrexnord.com/Terms-and-Conditions-of-Sale>.

"Regal Rexnord" is not indicative of legal entity. Refer to product purchase documentation for the applicable legal entity. Regal Rexnord and Svendborg Brakes are trademarks of Regal Rexnord Corporation or one of its affiliated companies. © 2025 Regal Rexnord Corporation, All Rights Reserved. MCF-11284-SV-EN-A4 01/25