



## Regal Rexnord™ Solutions For Port Cranes



**FALK** **Stromag** **SVENDBORG BRAKES** **WARNER** ELECTRIC

**PERCEPTIV**

**BAUER GEAR MOTOR**

**STEARNS**

**JAURE**





**BRANDS  
YOU KNOW,  
PERFORMANCE  
YOU TRUST.**

**DELIVERING  
SOLUTIONS  
WITH SUPERIOR  
EXPERTISE**

Regal Rexnord™ Products	Ship to Shore (STS) Cranes	Gantry Cranes	Straddle Carriers	Mobile Container Cranes	Ship Loaders & Unloaders
<b>SERVICE BRAKES</b>					
Svendborg Brakes™ FAV Thruster Disc Brakes	●	●	●	●	●
Svendborg Brakes™ SDB Thruster Disc Brakes	●	●	●	●	●
Stromag™ PT Series Electro Hydraulic Thrusters	●	●	●	●	●
<b>ELECTROMAGNETIC BRAKES</b>					
Stromag™ HPB Brakes	●	●	●	●	●
Warner Electric™ ERX Spring Applied Electrically Released Brakes		●	●		
Stearns™ AAB 361, SAB 82,000 & SAB 86,000 Motor Brakes	●	●	●	●	●
<b>RAIL CLAMPS, RAIL &amp; WHEEL BRAKES</b>					
Svendborg Brakes™ Limited Rail Clamps (LRC)	●	●		●	●
Svendborg Brakes™ Retractable Rail Clamps (RRC)	●	●		●	●
Svendborg Brakes™ Guided Rail Clamps (GRC)	●	●		●	●
Svendborg Brakes™ Rail Brakes (RB)	●	●		●	●
Svendborg Brakes™ Electric Wheel Brakes (EWB)	●	●		●	●
Svendborg Brakes™ Hydraulic Wheel Brakes (HWB)	●	●		●	●
<b>EMERGENCY BRAKES</b>					
Svendborg Brakes™ BSFL 500 Hydraulic Caliper Brakes	●	●	●	●	
Svendborg Brakes™ BSFC 600 Hydraulic Caliper Brakes	●	●		●	
Svendborg Brakes™ BSFC 3000 Hydraulic Caliper Brakes	●	●	●	●	
Svendborg Brakes™ Hydraulic Power Units SBH 1000	●	●		●	
Svendborg Brakes™ Hydraulic Power Units SBH 3000	●	●		●	
<b>COUPLINGS</b>					
Stromag™ Periflex™ Highly-Flexible Couplings		●	●		
Stromag™ SDKL – SVKL Highly-Flexible Couplings	●	●	●	●	●
Stromag™ SVT Drum Couplings	●				
CENATFLEX™-A Rubber-In-Compression Couplings				●	
CENTAFLEX™-TIR Roller Coupling				●	
Jaure™ MTFS Gear Couplings with Brake Disc	●	●	●	●	●
Jaure™ BARFLEX™ TCBR Barrel Couplings	●	●	●	●	●
Jaure™ Lamidisc™ Disc Couplings		●	●		
Jaure™ MT Gear Couplings	●	●	●	●	●
FALK™ Lifelign Gear Couplings	●	●	●	●	●
<b>GEARING</b>					
Falk™ V-Class Parallel Shaft Gear Drives	●	●		●	●
Bauer Gear Motor™ Parallel Shaft BF Series	●	●	●	●	●
Bauer Gear Motor™ Bevel BK Series	●	●	●	●	●
<b>HYDRAULIC BUFFERS</b>					
Svendborg Brakes™ PHS	●	●			●
<b>GEARED CAM LIMIT SWITCHES</b>					
Stromag™ Series 51 Planetary Gears	●	●	●		●
Stromag™ HGE Worm/Lever Gears	●	●		●	●
Stromag™ Light Cam™ and Light Cam™ M Worm Gears	●	●		●	●
<b>PERCEPTIV MONITORING SOLUTIONS</b>					
	●	●	●	●	●

# SERVICE BRAKES

## SVENDBORG BRAKES™

### THRUSTER DISC BRAKES

#### FAV SERIES



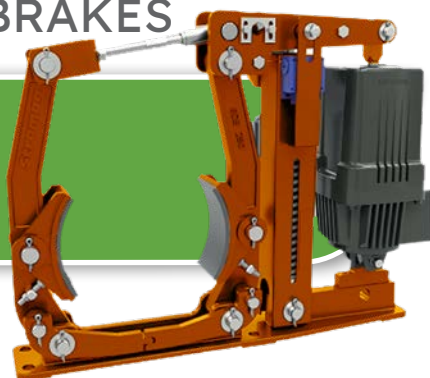
	FAV 10/15	FAV 21	FAV 40	FAV 50
Brake torque	250 – 920 Nm	650 – 4050 Nm	2700 – 16800 Nm	12700 – 21800 Nm
Center height	160 mm	230 mm	280 mm	280mm
Disc	220 – 550mm	355 – 710mm	450 – 1000mm	630 – 1000mm
Weight	44 kg	130 kg	222 kg	224 kg

Thruster disc brakes are designed for high braking torque applications such as ports, steel and mining.

Energizing the electro-hydraulic thruster releases the brake pads from the brake disc. When the electro-hydraulic thruster is de-energized, the brake is activated, as the levers apply the brake pads to the brake disc.

### THRUSTER DRUM BRAKES

#### SDB SERIES



Electro-hydraulic thruster drum brakes are designed to withstand the severe conditions of heavy-duty machinery in various industries.

Energizing the electro-hydraulic thruster releases the brake shoes from the drum. When the electro-hydraulic thruster is de-energized, the brake is activated, as the levers apply the brake shoes to the drum.

## Stromag™

### ELECTRO-HYDRAULIC THRUSTERS

#### PT SERIES 230/5 – 3010/6



- The PT series electro-hydraulic thrusters are capable of replacing most thrusters currently used in the industry
- The power is converted from electric to hydraulic via cylinder-piston arrangement
- Designed according to DIN 15430





## MODULAR BRAKING SYSTEMS

### HIGH PERFORMANCE BRAKE (HPB)



HPB brakes offer an optimized design for maximum performance in a small space.

Available in 2-face or 4-face designs, these compact modular are brakes designed for high speed applications.

- Torque range from 80 to 6400 Nm
- IP67 rating for harsh environment
- Type approvals for lifting appliances available
- Optimal heat dissipation ensures superior dynamic performance
- Wide range of options such as tachometer mounting, terminal box, anti-condensation heater, proximity-switch to monitor switching states and/or wear indication
- Rectifiers and quick switching units enhance switching comfort



## SPRING-APPLIED ELECTRICALLY RELEASED BRAKES

ERX series brakes offer a wide range of spring-applied, power-off electromagnetic brakes designed for parking and holding applications.

### ERX SERIES



- Torque range from 5 to 800 Nm
- Manual release
- Modular, available in single or double brake options
- Easy installation
- Indoor applications, UP64 option available
- CE / UL / CSA approved
- Limited e-stop/wear capable
- Non-sticking friction material
- Configurable (modular)



## MOTOR MOUNTED BRAKES

### AAB 361 SERIES SAB 82,000 SERIES SAB 86,000 SERIES



Stearns armature (AAB) and solenoid (SAB) actuated brakes are specifically designed for bulk handling and high outreach port applications.

- Torque range 35 to 1,000 lb-ft (47 to 1356 Nm)
- Optional encoder, additional gaskets, corrosion-resistant paint and internal space heater
- Cast & ductile iron enclosures
- Full crane duty side release and manual reset
- Brakes self adjust for wear
- Brass pressure plate and stationary discs
- IP56 rating
- IEEE 45, Federal Standard 46 & ABS compliant

# RAIL CLAMPS, RAIL & WHEEL BRAKES

## SVENDBORG BRAKES™

### RAIL CLAMPS

Regal Rexnord provides a large range of rail clamps (storm brakes) to secure outdoor cranes by preventing uncontrolled movement along the rail in case of sudden bursts of wind.

#### LIMITED RAIL CLAMPS (LRC)

Braking Force up to 650 kN



- Spring set/hydraulic release
- Guided along rail via guiding blocks
- Compensation: Horizontal +/- 30 mm  
Vertical +/- 5 mm

#### RETRACTABLE RAIL CLAMPS (RRC)

Braking Force up to 1200 kN



- Spring set and hydraulic release of serrated clamps
- Retracted above rail and setting time 2 – 30 seconds
- Compensation: Horizontal +/- 30 mm  
Vertical +/- 25 mm

#### GUIDED RAIL CLAMPS (GRC)

Braking Force up to 1000 kN



- Spring set and hydraulic release of serrated clamps
- Guided above rail via low wear rollers
- Compensation: Horizontal +/- 30 mm  
Vertical +/- 25 mm

### RAIL BRAKES

Rail brakes are used on cranes to secure and stabilize them, preventing unwanted movement during loading and unloading operations.

#### RAIL BRAKES (RB)

Braking Force up to 300 kN



- Hydraulic release
- Braking by spring on the top of the rail
- Balanced braking force
- Oversized longer lasting springs for reduced maintenance

### WHEEL BRAKES

Wheel brakes are used to control and halt the movement of the crane, ensuring precise positioning and safety during operation.

#### ELECTRIC WHEEL BRAKES (EWB)

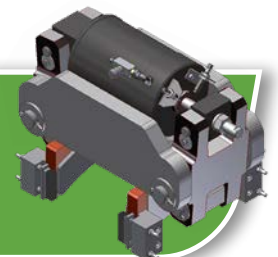
Braking Force up to 120 kN



- Spring set patented fully electric release
- No hydraulic components
- Setting time adjustable from 3 to 30 seconds
- Shoe alignment device

#### HYDRAULIC WHEEL BRAKES (HWB)

Braking Force up to 120 kN



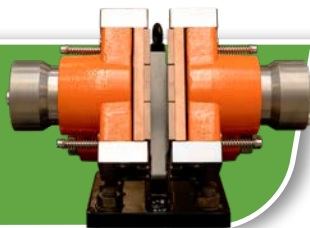
- Spring set hydraulic release
- Self lubricating bushings and stainless steel pins on all pivot points
- Setting time adjustable from 3 to 30 seconds
- Shoe alignment device

## SVENDBORG BRAKES™

### HYDRAULIC CALIPER BRAKES

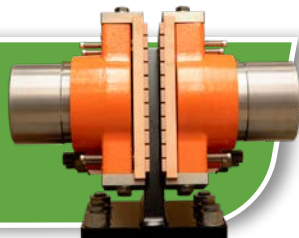
Emergency brakes are the last safety device to prevent a falling load and are installed directly on the flange of the drums. These brakes are applied in case of overspeed detection, power failure, mechanical transmission breakage or emergency stop controlled by operator.

#### BSFC 3000 Dual Spring



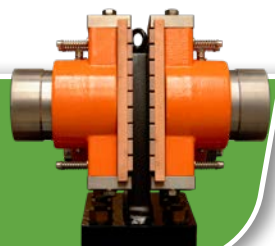
Brake	Clamping Force Fc [kN]			Pressure [MPa]	
	at airgap 1 mm	at airgap 2 mm	at airgap 3 mm	Operating	Maximum
BSFC 3110	110	97	84	17.5	23.0
BSFC 3140	140	126	112	21.0	23.0

#### BSFC 600 Dual Spring



Brake	Clamping Force Fc [kN]			Pressure [MPa]	
	at airgap 1 mm	at airgap 2 mm	at airgap 3 mm	Operating	Maximum
BSFC 633	335	310	285	12.5	23.0
BSFC 644	440	411	383	18.5	23.0

#### BSFL 500 Dual Spring



Brake	Clamping Force Fc [kN]			Pressure [MPa]	
	at airgap 1 mm	at airgap 2 mm	at airgap 3 mm	Operating	Maximum
BSFL 517	170	160	150	12.5	23.0
BSFL 524	240	218	197	16.5	23.0

### HYDRAULIC POWER UNITS

Hydraulic power units provide the necessary force to activate emergency brakes, ensuring rapid and reliable stopping power in critical situations.

**Hydraulic power units offer several advantages:**

- Redundant return valves for fast and safe operation
- Hand pump for manual release of brake in case of power failure
- Safe manual opening for crane lowering
- Reliable closed loop system - no external piping on hydraulic systems
- Standard components – spare parts in stock

#### SBH 1000

6L tank with junction box



#### SBH 3000

25L tank with junction box

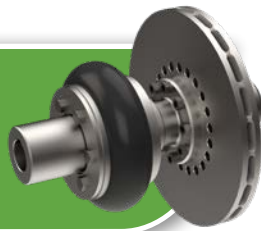


# COUPLINGS

**Stromag™**

## PERIFLEX™

Highly-Flexible Couplings



- Rubber-fabric tyre, mounted and removed without moving the machines
- Compensate extreme offsets, absorb torque peaks, and dampen vibrations

## SVT

Drum Couplings



- Flexible couplings with cam rings and flexible element
- Drum diameters: Ø 200 to 630 mm
- Simple mounting/dismounting
- Damping of shocks and torsional vibrations

## SDKL - SVKL

Highly-Flexible Couplings



- Cam rings and flexible element, mounted and removed without moving the machines
- Damping of shocks and torsional vibrations



## CENTAFLEX™-A

Torsional Couplings



CENTAFLEX-A couplings are designed for high performance and exceptional torsional elasticity. Built to dampen torsional vibrations and shocks, these couplings effectively protect your equipment.

- Split rubber element simplifies installation and maintenance
- Compensate for significant axial, radial, and angular misalignment
- Electrically-insulating and thermally resistant silicone or rubber design offers backlash free torque transmission

## CENTAFLEX™-TIR

Torsional Couplings



CENTAFLEX-TIR is a next-generation coupling featuring a robust design and progressive torsional characteristics, specifically engineered to help achieve efficiency goals.

- Soft progressive characteristics
- High allowable power loss
- Reduction of idling speed



**JAURE™**

## **BARFLEX™ TCBR**

Barrel Couplings



- High torque capacity reduces size and cost
- Assembly time reduction
- Increased axial misalignment
- Improved visual wear indicator

## **LAMIDISC™**

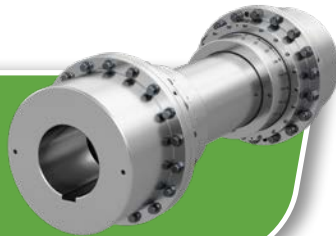
Disc Couplings



- Torsionally rigid and backlash-free
- Non-lubricated design reduces maintenance
- No need to disassemble the coupling to inspect. Discs can be checked during operation by using a strobe light

## **MT**

Gear Couplings



MT gear couplings are the most compact coupling solution for critical applications that demand high torque transmission.

- -30°C to 70°C temperature change
- Made in C45/55 material as a standard
- Maximum bore size of 275 mm
- Maximum torque capacity of 407,000 Nm

## **MTFS**

Gear Couplings with Brake Disc



MTFS gear couplings with brake disc combine the high torque capabilities of a gear coupling with the added safety of a brake disc.

- Two flanged sleeves with internal spur gear teeth joined by a bolted connection
- Design features two crowned gear teeth hubs that provide high torque density while still allowing for misalignment

**FALK™**

## **LIFELIGN**

Gear Couplings



Falk Lifalign gear couplings feature triple-crowned teeth that are crowned on the root, tip and face to articulate freely and minimize wear caused by misalignment.

- Large flex hubs accommodate high-torque applications in space-limited installations
- Bore capacity up to 43 inches (1,067 mm)
- Maximum torque capacity of 8,185,763 Nm

## BAUER GEAR MOTOR™

### GEARED MOTORS

Robust Bauer geared motors use IM2 paint which provides corrosion protection, allowing for use in harbors, lock gates, piers and offshore installations.

Available IP68 protection is also available to allow submersible operation.

#### PARALLEL SHAFT GEARED MOTORS BF SERIES



Shaft mounted geared motors with integrated torque arm can be easily attached and installed.

- Motor power from 0.03 kW to 75 kW
- 10 gearbox sizes for torques from 90 Nm – 18500 Nm
- Gearbox housing with integral torque arm
- High efficiency through 2 stage base design
- High enclosure IP65 as standard

#### BEVEL GEARED MOTORS BK SERIES



Power dense, right angle, bevel geared motors ensure the highest efficiency especially when used with frequency inverters.

- Motor power from 0.03 kW to 75 kW
- 10 gearbox sizes for torques from 80 Nm to 18500 Nm
- Right angle gearbox with optional universal attachment
- High efficiency through 2 stage base design
- High enclosure IP65 as standard

## FALK™

### GEAR DRIVES

#### V-CLASS PARALLEL SHAFT



Built to handle the heaviest loads while delivering smooth torque transmission.

- Motor power from 11 kW to 18650 kW
- 29 gearbox sizes for torques from 5900 Nm to 1030000 Nm
- Save times and money by reducing maintenance and repair time with a horizontally split housing design
- Lower your total cost of ownership with standard magnum seals and cooling fins designed to extend the life of your gearbox



## GEARED CAM LIMIT SWITCHES

Compact hoists must be limited at their top and bottom cutoff points to protect the equipment in use. Stromag geared cam limit switches attach directly to the drum to ensure these needs are met.

These geared cam limit switches can easily determine absolute positions with great precision when integrated with available monitoring technologies. These positional values can be converted into additional data points such as degree of rotation and overspeed.

### SERIES 51

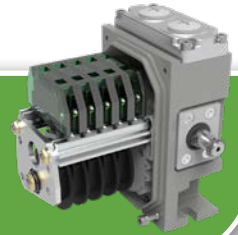
Planetary Gears



Planetary gears are used everywhere angles or distances cannot be limited with switchgear, only indirectly on the basis of the measured shaft angle. An example of this application involves limiting the hook lift of a crane hoist.

### HGE

Worm/Lever Gears

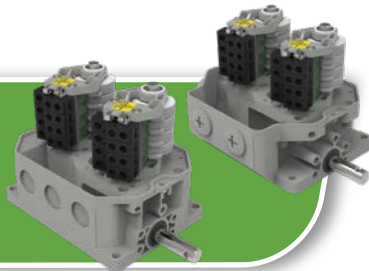


Worm/lever gears reduce the number of rotations transferred to the geared cam limit switches input shaft to a maximum angle of 320° at the cam disc (on 40° cam discs). The adjustable cam discs then actuate the mechanical switching contacts.

When equipped with mechanical forced opening switches that comply with EN 60947-5-1, geared cam limit switches are the ideal choice for compact hoists.

### LIGHT CAM® LIGHT CAM® M

Worm Gears

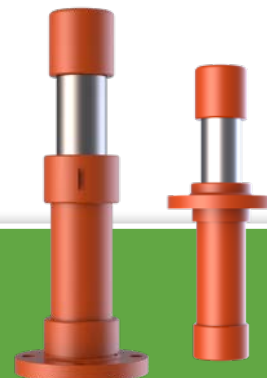


The classical applications include crane hoists, traversing, and slewing drives.

## SVENDBORG BRAKES™

## HYDRAULIC BUFFERS

### PHS HYDRAULIC BUFFERS



Buffers are used to absorb the energy from collisions in rail transport and crane systems. They are suitable for various load capacities and speeds, playing a crucial role in safety and extending the lifespan of these systems.

- Damping force 70 to 670 kN
- 2 types: rear or front mounting
- 4 sizes: 063, 080, 100 and 125
- 15 strokes (that makes 120 different models)
- Strokes: 100 to 800 mm
- Total length max.: 456 to 2114 mm
- Safety chain and protection cover available



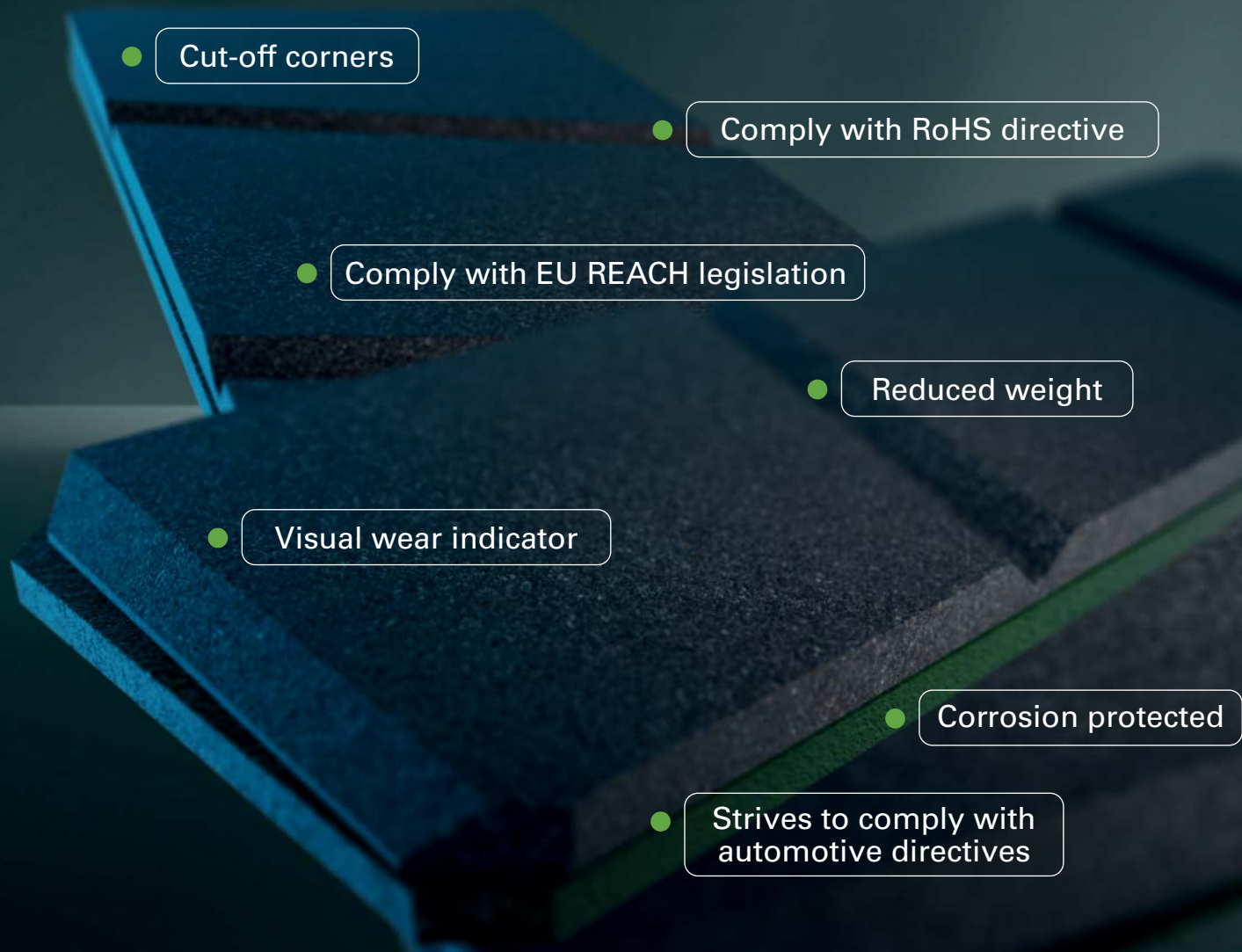
## THE **GREEN** ALTERNATIVE

by SVENDBORG BRAKES

**To address environmental and health concerns, we have developed a series of friction materials that comply with REACH legislation.**

- Asbestos free
- Less than 0.1% Mercury
- Less than 0.1% Chromium 6+
- Less than 0.1% Lead
- Less than 0.01% Cadmium

**Available for all OEM and aftermarket applications.**



# We predict a more reliable tomorrow.

## PREDICTIVE MAINTENANCE DRIVES RESULTS:

Reduces maintenance costs by  
**50%**

Increases machine life up to  
**40%**

Cuts repair and overhaul time by  
**60%**

Decreases spare parts inventory by  
**30%**

Reduces unexpected failures by  
**55%**

### INTELLIGENT SENSORS



- Vibration
- Temperature
- Torque
- Torsional vibration
- Lubrication
- Current
- Speed

### PERCEPTIV PLATFORM



- Condition monitoring
- Predictive maintenance
- Machine health dashboard
- Analytics & reports
- Alerts (dashboard, SMS, email)
- Enterprise, site, and user management
- API available for cloud-to-cloud integration capabilities
- Web & mobile access

### RELIABILITY SERVICES



#### Prescriptive Reports by Reliability Analysts

Severity	Status	Analyst Recommended Actionable Insights
Critical	Red	Excessive vibration, replace bearing
Warning	Yellow	Inspect gearbox and verify lubrication
Advise	Blue	Continue monitoring motor
Good	Green	No issues

- On-site diagnostics
- Solutions design
- Expert installation & implementation
- Asset tagging
- Statistical alarm calculation
- Predictive & prescriptive analysis with actionable recommendations
- End-to-end services (i.e. turnkey implementation)



A worker in a hard hat and earmuffs is seen from behind, looking out at a port with large cranes. The worker is wearing a dark jacket with "24/7 SERVICE SUPPORT" on the back. The background shows a large port with several cranes and ships in the water under a blue sky with wispy clouds.

**SERVICE**

# GLOBAL SERVICE TEAMS

Whenever you require our services, we respond swiftly and effectively. We recognize the urgency and significance, whether it's for spare parts or service support. Our dedicated team is committed to ensuring that no matter where you are in the world, you will always be within our reach.

- Scheduled maintenance to minimize downtime
- Replacing worn part to ensure efficient operations
- Evaluating product improvements to offer the best upgrade options to improve performance
- Auditing and managing applications to ensure they are functioning efficiently
- Servicing key components to optimize reaction times

**24/7<sup>®</sup>**  
SERVICE  
SUPPORT





## Stop seeing individual parts. Start seeing unlimited possibilities.

Regardless of your objectives or the challenges with your application, Powertrain Solutions can help you achieve your unique goals. No matter what your application looks like, it relies on many components, all working together. But not all components are made to work together reliably and efficiently. Powertrain Solutions has the insight, experience and expertise to engineer your collection of components into a fully optimized system — giving you solutions that boost efficiency, improve reliability and performance, lower costs and simplify ordering and logistics.

---

### WHERE OTHERS SEE PARTS, WE SEE A SYSTEM

---



Bearings



Belt & Chain  
Drives



Clutches &  
Brakes



Conveying



Disc & Gear  
Couplings



Motors



Speed Reducers  
& Gearboxes



Monitoring &  
Diagnostics

---

**It's time to see the bigger picture.**

Get started at [RegalRexnord.com/Powertrain](http://RegalRexnord.com/Powertrain)



**FALK**

**Stromag**

**SVENDBORG  
BRAKES**

**WARNER** ELECTRIC

**PERCEPTIV**

**BAUER GEAR MOTOR**

**STEARNS**

**JAURE**

**Regal Rexnord**

Customer Service: 800-626-2120

Technical Service: 800-626-2093

[CustomerService.PTSolutions@regalrexnord.com](mailto:CustomerService.PTSolutions@regalrexnord.com)

[regalrexnord.com](http://regalrexnord.com)

The proper selection and application of products and components, including assuring that the product is safe for its intended use, are the responsibility of the customer. To view our Application Considerations, please visit <https://www.regalrexnord.com/Application-Considerations>.

To view our Standard Terms and Conditions of Sale, please visit <https://www.regalrexnord.com/Terms-and-Conditions-of-Sale> (which may redirect to other website locations based on product family).

"Regal Rexnord" is not indicative of legal entity. Refer to product purchase documentation for the applicable legal entity.

Regal Rexnord, Bauer Gear Motors™, CENTA™, Falk™, Perceptive™, Stearns™, Stromag™, Svendborg Brakes™ and Warner Electric™ are trademarks of Regal Rexnord Corporation or one of its affiliated companies.

© 025 Regal Rexnord Corporation, All Rights Reserved. MCB-10929-C-EN-A4 05/25



**RegalRexnord**